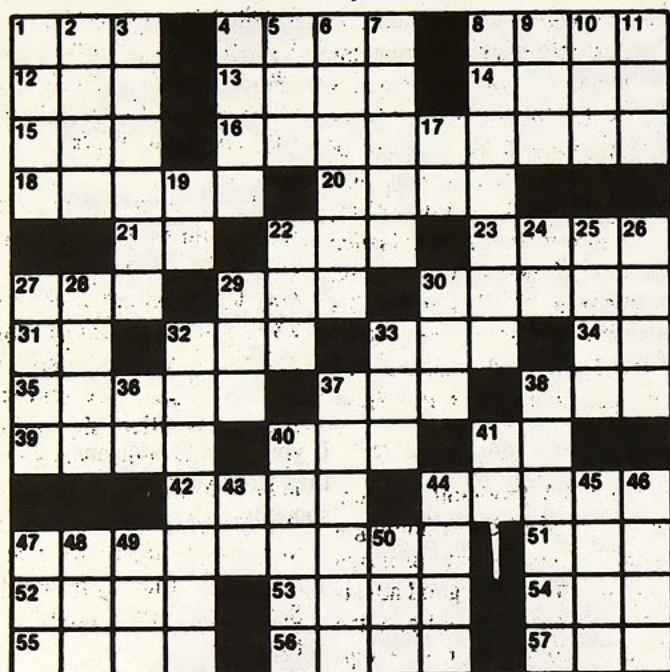


Crossword Companion



Answers on backpage

ACROSS

1. Equal
4. Corded fabrics
8. Artist
12. A lifetime
13. Related
14. Enclosure
15. Male sheep
16. Intensifier of sound
18. Wash away
20. Talless amphibian
21. At
22. Chop
23. Change writing
27. Vaseline
29. Girl (clang)
30. Give pleasure
31. Southern state (abbr.)
32. Cat's sound
33. Expression of distaste
34. 6th scale note
35. Lawful
37. Faintly lighted
38. Dreaming eye movement (abbr.)
39. Arabian prince
40. Encountered
41. Male pronoun
42. Angers
44. Sink
47. Ape another
51. Frozen water
52. Village in Ireland
53. Ireland (poetic)
54. Signal for help
55. Aquatic animal
56. Sleep
57. Explosive

DOWN

1. Slice
2. Marine algae
3. Isolated
4. Unusual
5. Strain to fill out
6. Gun
7. Sneak
8. World of scholarship
9. Night bird
10. Self
11. Three (pref.)
17. Sodium symbol
19. Perform
22. Rule
24. Duke (abbr.)
25. Small island
26. Squad
27. Market
28. Elementary (abbr.)
29. Semisolid material
30. Direct
32. Pertains to marriage
33. Able
36. Soldier (abbr.)
37. Want
38. Fight off
40. Measure
41. Laugh sound
43. Egyptian sun god
44. Curved
45. Idol
46. Bird's home
47. Poss. pronoun
48. West
49. Gershwin
50. Viscount (abbr.)

It's About Time

by Roger Koopman

What is time? Some claim that time is the fourth dimension; the first three being length, width and height. My friend Tim Larson who attends Drake University in Des Moines, Iowa, suggests that time is the dimension above that which you can physically perceive. In other words, time would be the third dimension for a two dimensional creature. Either way, it seems as though time is an intrinsic thread of the fabric of our universe. Time is influenced by gravity which is a property of all matter. Time is even influenced by the velocity of an object. Granted, the velocities that we travel are negligible when compared to the speed of light—approximately 186,000 miles per second. But what is time to the general public?

For most of us, time is tool with which to create structure for us to live and function. We all have a schedule of some sort to keep. If we don't keep that schedule, the structure of our life may break down for a while which can create stress. This time tool, in fact, is so important to us that on our very own Concordia College campus in St. Paul, MN, there are over 70 clocks to help us keep track of where time is at and what it's doing whenever we need to know.

Over the last couple weeks, I have traveled around the campus to check out these clocks and see how well they help us in our efforts to keep on task. I first set my watch to the U.S. Naval Observatory Master Clock by calling (202) 653-1800. This call lasts a minute if you want to listen that long. I then toured the campus to compare over 70 clocks, either in classrooms or on general public display, to the standard U.S. Naval Observatory time. The following is what I found.

Out of the 75 clocks I accepted as logical data, the average came out to be 23 seconds ahead of the U.S. Naval Observatory. For those who are interested, the standard deviation was 1 minute and 41 seconds. This means that if you randomly choose a clock at CSP, you have a 95% chance of being within 3min. and 23 sec. of the CSP average (which is of course 23 seconds fast). Plus or minus 3min. and 23 sec. is a spread

of 6min and 45 seconds, though. That's sort of scary with some people's tight schedules. It is less than the 10 minutes we have to get from class to class, however. That's comforting.

These are some other interesting facts. The clock closest to the CSP average was not one clock but two clocks. Strangely enough they were the clocks in C-205 and S-205 at +20 seconds. What I was more interested in, however, was how close clocks were to the U.S. Naval Observatory time. It became a contest to see which clock was the closest. Here are the top five rankings for clocks closest to U.S. Naval Observatory time:

Gangelhoff 2nd floor lobby	2sec.
S-104 south clock	+2sec.
M-161	+3sec.
S-104 north clock	4sec.
S-106	+4sec.
General Biology Lab	6sec.
S-103	+6sec.
Ceramics Room	+6sec.
C-203	+7sec.

It was very competitive with ties for first, third and fourth place. The Science Department pretty much controlled the competition; however, with five clocks in the top five rankings. I feel that it's worth mentioning that Prof. Thomas Hanson's wrist watch had a difference of 0 seconds from U.S. Naval Observatory time. (Wow!!) On the other hand, there were those clocks that were the farthest off. Here are the worst five rankings:

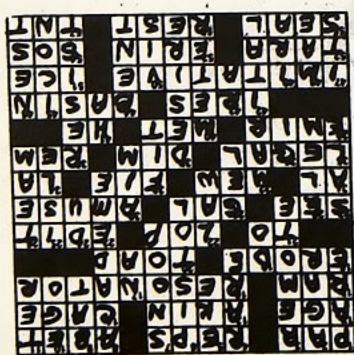
Art-4	+6:05
Robinson Room	+3:57
Tier 1 east clock	+3:25
Library Computer Lab	+3:10
Class Room Bldg. 1st floor hall north	-3:10
Class Room Bldg. 1st floor hall south face	-3:10
Class Room Bldg. 2nd floor hall south face	-3:05

Oddly enough, the competition for worst off was great as well. Actually there were

Time continued on page 10

Answers To

Crossword



ROOMIES by CHRIS ROTH

